



Key Features

- Ergonomic design permits effortless, one-handed operation.
- Full color TFT LCD to display custom buttons, text and graphics.
- Integrated high-resolution touchscreen.
- Powerful 32-bit, 200Mhz Xscale® processor.
- 32MByte of Flash Memory.
- Tilt switch can automatically turn on the backlight when picked up.
- Extremely bright, backlit display and keypad.
- Intuitive layout of keypad buttons for commonly used functions.
- Transmits IR and RF (or both - on a single button press!).
- Optional RF receiver allows you to transmit through walls, cabinets, etc.
- System includes a Lithium-Ion battery and docking station.
- Completely customizable, programmable and upgradable.
- Extremely wide IR transmitting frequency range.
- Optional 'Voltage' and 'Video' sensing modules to monitor power status of equipment.
- Optional interface for RS-232 controlled equipment.
- Non-volatile Flash memory stores your system configuration even when power is not present.
- Field upgradable firmware.
- USB Programming.

T3 Universal Controller

The T3 is RTI's ultimate handheld universal system controller. With a full color TFT LCD display, powerful 32-bit MCU and 32MB of memory, the T3 takes remote control to a new level.

The amazing T3 Universal System Controller combines the power and flexibility of a graphic LCD touchscreen with an ergonomic design that permits effortless one-handed operation. On its own, the T3 is the most user-friendly universal remote control you have ever used. Combined with the other RTI products, the T3 becomes a robust commercial-quality control system.

Description

The T3 maintains the perfect balance between a large touchscreen and frequently used hard buttons. It is thinner, lighter and has better ergonomics for one-handed operation than any product in it's class. This design overcomes the need for compromise between form and function. Sleek and perfectly balanced, the T3 is also infinitely flexible and expandable.

The T3 takes complete control of the home theater, replacing all other remotes. It features a bright, high-contrast TFT LCD that can display custom buttons, text, graphics and animations. In addition to the backlit display, there are 16 hard buttons that allow easy access to frequently used functions. Programming is easy and convenient thanks to the Windows® based Integration Designer® software.

The T3 is more than just a universal remote control - it's an expandable control system. When used with the available RTI accessory devices, the T3 is capable of RF transmission through walls and cabinets, power sensing for reliable operation, and RS-232 communications for advanced control.

Call 952-253-3100

www.rticorp.com

Specifications

Power.....	3.6 VDC, 1200 mAh Lithium-Ion Battery Pack
Power Management.....	Automatic On/Off (tilt switch)
Infrared Control Range.....	30 feet (9.1 meters) @ 60 degrees
Infrared Frequency Transmission Range	15kHz - 460kHz
Radio Frequency Control Range	Up to 100 feet (30.5 meters)
.....	(with optional System Interfaces/Processors)
Radio Frequency Carrier	433 MHz
Operating Temperature	+32°F to +122°F (0°C to +50°C)
Operating Humidity.....	5% to 95% Non-condensing
Touchscreen Display.....	High-brightness color TFT LCD
.....	1/4 VGA (240x320 pixels) with 65K colors
.....	Integrated high-resolution touchscreen
Display Size	3.5 in (89mm) diagonal
Backlights	White LED (Display), Blue/Amber LED (Keypad)
Nominal Run Time on Full Charge	2.5 hours minimum, continuous use
.....	(5 to 7 days on average use)
Standby Time on Full Charge	30 Days
Battery Charge Time	3-4 Hours
Total System Memory.....	32M Bytes Flash (non-volatile) memory
Device Capability.....	Total number of devices is limited only by memory
Macro Capability.....	Unlimited steps in a single macro
.....	Total number of macros is limited only by memory
.....	Macro capability on every button
Communications.....	USB programming port
Dimensions (L x W x D).....	7.6 in (193mm) x 3.1 in (79mm) x 1.1 in (28mm)
Enclosure.....	High-impact molded ABS plastic
Weight	7.4 oz. (210g) with battery pack
Warranty.....	One Year (Parts & Labor) / 90 days on the battery

All specifications subject to change without notice



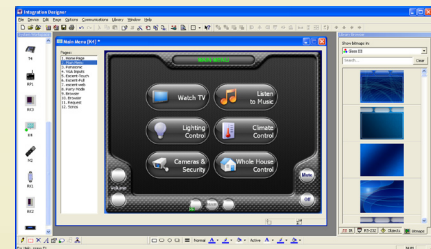
Accessories

RP-1	Remote Control Processor
ZRP-5	Remote Control Processor
ZRP-6	Remote Control Processor
MRP-64	Multi-Room Control Processor
XP-8	Advanced Control Processor
RM-433	RF Receiver
ZM-24	2.4GHz Transceiver Module
RCM-12	Relay Control Module
ECB-5	IR Emitter Connecting Block
CM-232	RS-232 Communication Module
VPS-1	Voltage Power Sensor
SPS-1	Video Sync Power Sensor



Other RTI Products

T1-B	Universal System Controller
M2	Universal System Controller
T2-B	Universal System Controller
T2-Cs	Universal System Controller
T2-C	Universal System Controller
T3-V	Universal System Controller
T4	Universal System Controller
U1	Weather Resistant Controller
U2	Weather Resistant Controller
RKM-1	In-Wall Multi-Room Audio Keypad
RK1	In-Wall Keypad Controller
RK2	In-Wall Touchscreen Controller
RK3	In-Wall Touchscreen Controller
K4	In-Wall Touchscreen Controller
IR-PRO	Infrared Capture System



Integration Designer® Programming Software



It's Under Control®