



## T2+ Universal Controller

The T2+ is the second generation of RTI's ground breaking T2 remote control platform. It maintains the original hybrid touchscreen concept while adding extra buttons and improved ergonomics. New firmware provides enhanced programming capabilities while hardware improvements include a USB programming port, 50% more memory, and the latest Lithium-Ion battery technology.

The T2+ is the foundation of a very powerful, yet uncomplicated home theater control system. On its own, the T2+ is the most user friendly universal remote control available. Combined with the other Integration® products, the T2+ becomes a robust commercial-level control system.

### Key Features

- Comfortable ergonomic design permits effortless, one-handed operation.
- Easy-to-read LCD to display custom buttons, text, graphics and scrolling lists.
- Digital matrix touchscreen never needs calibration.
- Tilt switch can automatically turn on the backlight when picked up.
- Extremely bright, backlit display and keypad.
- Intuitive layout of keypad buttons for commonly used functions.
- Transmits IR and RF (or both -on a single button press!).
- Optional RF receiver allows you to transmit through walls, cabinets, etc.
- Completely customizable and programmable.
- Extremely wide IR transmitting frequency range.
- Optional 'Voltage' and 'Video' sensing modules to monitor power status of equipment when used with certain RTI processors.
- Optional interface for RS-232 controlled equipment when used with certain RTI processors.
- Non-volatile Flash memory stores your system configuration even when power is not present.
- Field upgradable firmware.
- USB Programming.

### Description

The T2+ maintains the perfect balance between touchscreen and hard buttons. With the new design, the T2+ is thinner, lighter and has better overall ergonomics for one hand operation. This design overcomes the need for compromise between form and function. Sleek and perfectly balanced, the T2+ is also infinitely flexible and expandable.

The T2+ takes complete control of the home theater, replacing all other remotes. It features an intuitive, easy-to-read LCD that can display custom buttons, text and graphics. In addition to the backlit display, there are 32 hard buttons that allow easy access to frequently used functions. Programming is easy and convenient thanks to the Windows® based Integration Designer® software.

The T2+ is more than just a universal remote control, it is a complete control system. The system is capable of infrared and radio frequency transmission, power sensing for reliable operation, and RS-232 communications for advanced control.

Call 952-253-3100

[www.rticorp.com](http://www.rticorp.com)



It's Under Control®

## Specifications

Power.....	3.6 VDC, 850 mAh Lithium-Ion Battery Pack
Power Management.....	Automatic On/Off (tilt switch)
Infrared Control Range.....	30 feet (9.1 meters) @ 60 degrees
Infrared Frequency Transmission Range .....	15kHz - 460kHz
Radio Frequency Control Range .....	Up to 100 feet (30.5 meters)
.....	(with optional System Interfaces/Processors)
Radio Frequency Carrier .....	433 MHz
Operating Temperature .....	+32°F to +122°F (0°C to +50°C)
Operating Humidity.....	5% to 95% Non-condensing
Touch Panel Display .....	High-contrast STN LCD Digital Matrix
.....	64w x 128h pixels (Touchscreen never needs calibrating)
Display Size (H x W) .....	2.4 in x 1.3 in (61mm x 33mm)
Backlights .....	White EL (Display), Blue EL (Keypad)
Nominal Run Time on Full Charge .....	6 hours minimum, continuous use
.....	(10 to 15 days on average use)
Standby Time on Full Charge .....	30 Days
Battery Charge Time .....	3-4 Hours
Total System Memory.....	256K Bytes Flash (non-volatile) memory
Device Capability.....	Total number of devices is limited only by memory
Macro Capability.....	Unlimited steps in a single macro
.....	Total number of macros is limited only by memory
.....	Macro capability on every button
Communications.....	USB programming port
Dimensions (L x W x D) .....	9.9" (251mm) x 2.5" (64mm) x 1.1" (28mm)
Enclosure.....	High-impact molded ABS plastic
Weight .....	8.5 oz. (243g) with battery pack
Warranty .....	One Year (Parts & Labor) / 90 days on the battery

All specifications subject to change without notice



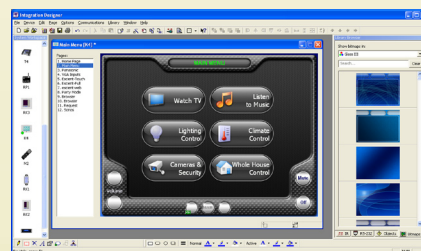
## Accessories

RP-1	Remote Control Processor
ZRP-6	Remote Control Processor
MRP-64	Multi-Room Control Processor
XP-8	Advanced Control Processor
RM-433	RF Receiver
RCM-12	Relay Control Module
ECB-5	IR Emitter Connecting Block
CM-232	RS-232 Communication Module
VPS-1	Voltage Power Sensor
SPS-1	Video Sync Power Sensor



## Other RTI Products

T1-B	Universal System Controller
M2	Universal System Controller
T2-B	Universal System Controller
T2-Cs	Universal System Controller
T2-C	Universal System Controller
T3-V	Universal System Controller
T4	Universal System Controller
U1	Weather Resistant Controller
U2	Weather Resistant Controller
RKM-1	In-Wall Multi-Room Audio Keypad
RK1	In-Wall Keypad Controller
RK2	In-Wall Touchscreen Controller
RK3	In-Wall Touchscreen Controller
K4	In-Wall Touchscreen Controller
IR-PRO	Infrared Capture System



Integration Designer® Programming Software

5775 12th Avenue East, Suite 180, Shakopee, MN 55379  
 PH: (952) 253-3100 • Website: [www.rticorp.com](http://www.rticorp.com)

**RTI**  
 It's Under Control®