



RP-6 Remote Control Processor

RTI's RP-6 Remote Control Processor is an advanced control system for RTI's family of universal remote controls. Unlike simple IR-to-RF converters, the RP-6 stores all of the system's commands where they should be – within a central controller at the equipment rack. The RP-6 receives trigger codes from RTI remote controls using external IR or RF receivers, or from hard-wired in-wall controllers. Multiple receivers can be used together for greater coverage allowing you to discover new freedom – reliable control of the entertainment system from just about anywhere.

Key Features

- Six multi-purpose I/O ports.
- Three programmable relay outputs.
- IR input for IR pass-through or control.
- Input for connection of multiple RF Receiver modules.
- RS-485 communications jack for future expansion.
- I/O ports are compatible with industry standard IR emitters and repeater systems.
- All output ports incorporate both short-circuit and overload protection.
- Variable IR output power on all ports.
- I/O ports support optional RTI Power Sensing and Communication modules.
- Programmed using the Integration Designer® software.
- Non-volatile Flash memory stores your system configuration even when power is not present.
- Field upgradable firmware.
- USB programming.

Description

The RP-6 Remote Control Processor provides advanced control and automation of any size home theater system. The RP-6 packs big time power in one small package – providing an IR router, triggered relay outputs, an IR connecting block and IR pass-through. You can even connect optional RS-232 interface cables for greater control, and power sensing modules to insure that your system's operation is always predictable and reliable.

Call 952-253-3100

www.rticorp.com



It's Under Control®

Specifications

Power Supply	+12V DC, 1A
Number of Output Ports.....	Six
Output Ports	Custom 3.5mm 4-conductor jacks
.....	Designed for RTI modules as well as industry-standard IR emitters.
IR Output Drive.....	100mA maximum (per port, adjustable)
.....	200mA maximum (high IR output port)
Infrared Frequency Transmission Range	15kHz - 460kHz
Infrared Input.....	Compatible with industry-standard repeaters and receivers
Relays.....	Three, 3 Amps @ 30 VDC
Mounting.....	Wall-mount or free standing
Dimensions (W x H x D).....	9.3" (236mm) x 5.3" (135mm) x 1.5" (38mm)
Weight	1 lb. 3 oz. (543g)
Warranty.....	One Year (Parts & Labor)

All specifications subject to change without notice

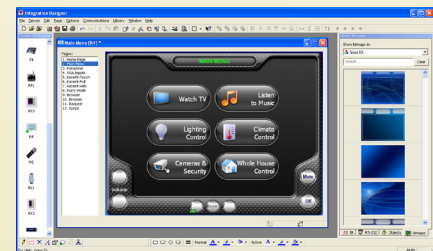
Accessories

RM-433	RF Receiver
CB-4/CB-8	Touchpanel Connecting Block
RCM-12	Relay Control Module
ECB-5	IR Emitter Connecting Block
CM-232	RS-232 Communication Module
VPS-1	Voltage Power Sensor
SPS-1	Video Sync Power Sensor



Other RTI Products

T1	Universal System Controller
T2-B	Universal System Controller
T2+	Universal System Controller
M2	Universal System Controller
T2-Cs	Universal System Controller
T2-C	Universal System Controller
T3-V	Universal System Controller
T4	Universal System Controller
U1	Weather Resistant Controller
U2	Weather Resistant Controller
RKM-1	In-Wall Multi-Room Audio Keypad
RK1	In-Wall Keypad Controller
RK2	In-Wall Touchscreen Controller
RK3	In-Wall Touchscreen Controller
K4	In-Wall Touchscreen Controller
IR-PRO	Infrared Capture System



Integration Designer® Programming Software