



## Key Features

- Stores all system commands and macros for reliable control.
- Integrated RF receiver.
- High-output infrared port.
- Power sensing input for monitoring equipment status.
- Works with all RTI 433MHz wireless remotes.
- IR output port incorporates both short-circuit and overload protection.
- RF signal reception LED.
- Seamless programming using Integration Designer® software.
- Field upgradable firmware.
- Non-volatile Flash memory stores your system configuration even when power is not present.
- USB Programming.
- Includes ECB-5 IR Connecting Block.

## RP-1 Remote Control Processor

RTI's RP-1 is a low-cost programmable control system that is designed to automate the operation of audio/video and other electronic systems. It combines many of the capabilities of RTI's RP-6 Remote Control Processor with an integrated RF receiver – all in one small, cost-effective package. The RP-1 is the perfect control system for single room installations such as home theaters, media centers, and bedrooms.

## Description

The RP-1 Remote Control Processor is a powerful central controller that is designed for seamless integration with RTI's family of universal remote controls. Unlike simple IR-to-RF converters, the RP-1 stores all system commands and macros where they should be – within a central processor. The RP-1 is a single box solution, receiving RF trigger codes from RTI remotes via the integrated receiver.

The RP-1 Remote Control Processor provides a truly reliable, cost-effective control processor in a small package. It can be combined with any RTI remote control to form a robust control system for almost any home A/V configuration. The RP-1 even comes equipped with a power sensing port to ensure that your system's operation is always reliable and predictable.

Call 952-253-3100

[www.rticorp.com](http://www.rticorp.com)

## Specifications

Power Supply.....	+12V DC, 1A
Number of Output Ports.....	One (1) High Power IR Port
IR Output Drive.....	200mA maximum
Infrared Transmission Bandwidth .....	15kHz - 460kHz
RF Receiver Carrier Frequency.....	433 MHz
Power Sense Input .....	Off = 0VDC - 2VDC; On = 3VDC - 20VDC
Mounting.....	Wall-mount or free standing
Dimensions (W x H x D).....	5.5" (140mm) x 3.3" (84mm) x 1.4" (36mm)
.....	(width dimension does not include antenna or connectors)
Weight .....	7.0 oz. (198g)
Warranty.....	One Year (Parts & Labor)

All specifications subject to change without notice

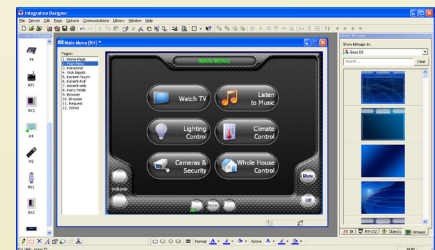


ECB-5 Connecting Block  
included with kit



## Other RTI Products

<b>T1-B</b>	<b>Universal System Controller</b>
<b>M2</b>	<b>Universal System Controller</b>
<b>T2-B</b>	<b>Universal System Controller</b>
<b>T2-Cs</b>	<b>Universal System Controller</b>
<b>T2-C</b>	<b>Universal System Controller</b>
<b>T3-V</b>	<b>Universal System Controller</b>
<b>T4</b>	<b>Universal System Controller</b>
<b>U1</b>	<b>Weather Resistant Controller</b>
<b>U2</b>	<b>Weather Resistant Controller</b>
<b>RKM-1</b>	<b>In-Wall Multi-Room Audio Keypad</b>
<b>RK1</b>	<b>In-Wall Keypad Controller</b>
<b>RK2</b>	<b>In-Wall Touchscreen Controller</b>
<b>RK3-V</b>	<b>In-Wall Touchscreen Controller</b>
<b>K4</b>	<b>In-Wall Touchscreen Controller</b>
<b>ZRP-5</b>	<b>Remote Control Processor</b>
<b>ZRP-6</b>	<b>Remote Control Processor</b>
<b>MRP-64</b>	<b>Multi-Room Control Processor</b>
<b>XP-8</b>	<b>Advanced Control Processor</b>
<b>RM-433</b>	<b>433MHz RF Receiver</b>
<b>ZM-24</b>	<b>2.4GHz Transceiver Module</b>
<b>RCM-12</b>	<b>Relay Control Module</b>
<b>ECB-5</b>	<b>IR Emitter Connecting Block</b>
<b>vIRsa Mouse</b>	<b>IR Emitter</b>
<b>CM-232</b>	<b>RS-232 Communication Module</b>
<b>VPS-1</b>	<b>Voltage Power Sensor</b>
<b>SPS-1</b>	<b>Video Sync Power Sensor</b>
<b>IR-PRO</b>	<b>Infrared Capture System</b>



Integration Designer® Programming Software