



Key Features

- Stylish low-profile faceplate available in black and white with a gloss finish.
- Full color 10.2" TFT LCD (1024x600) with integrated touchscreen.
- Fanless PC architecture incorporating powerful Intel® Atom™ processor N270 1.6GHz CPU and 1GB of RAM.
- Running Windows® Embedded Standard OS allows multi-tasking of control and web browsing.
- Network connectivity via an integrated gigabit Ethernet port and 802.11b/g wireless LAN module.
- May be installed in a wall or rear panel provides VESA compliant screw holes for mounting bracket applications.
- Completely customizable and programmable.
- Cabling options include one RS-232 COM port, one RS-232/RS-485/RS-422 COM port, four USB 2.0 ports and one VGA port.
- Capable of two-way control when used with RTI accessory devices.
- 4GB of non-volatile Flash memory stores your program even when power is lost.
- Field upgradable firmware.
- USB and Ethernet programming.

RK10 In-Wall Controller

Some applications require more than just the standard level of control, and the RK10 In-wall Controller answers the call. With a big, beautiful touchscreen display and the horsepower of an Intel® Atom processor, it combines the power of a PC with the reliability and ease-of-use of a control system. Flexible mounting options allow the RK10 to be flush or surface mounted on a wall, as well as attached to standard VESA style display mounts. Control and communication capabilities include built-in wired and wireless Ethernet, even direct RS-232 control. Designed for sophisticated installations that require a touchpanel with the size and power to take command of a room's environmental and media technology, the RK10 also possesses the style and user-friendliness required to fit any type of setting.

Description

Designed to be the workhorse in all types of rooms, the RK10 is perfect for the boardroom and the kitchen - or wherever the touchpanel has to do it all. With a large 10.2 inch widescreen display, it has the real estate needed for intuitive control of the equipment, environment, internet, and IT resources. When used with other RTI automation devices, the RK10 can provide a virtually unlimited level of control.

The RK10 is essentially a flat panel PC running Windows® Embedded Standard OS, powered by an Intel® Atom processor. More than just a PC however, the user interface is fully programmable using RTI's Integration Designer® Software - making it easy to display custom buttons, text and graphics. The RK10 is powerful enough to be used as a standalone device, and really shines when it used with available RTI accessory devices and advanced control options such as infrared routing, relay control, power sensing and two-way communications become available. Built-in wired and wireless (802.11b/g) Ethernet allows access to MotionJPEG video from network security cameras, downloading of data from the Internet, control of music or video hard drive servers, and much more.

Call 952-253-3100

www.rticorp.com



It's Under Control®

Specifications

Power.....	+24VDC, 2A max
Power Management.....	Adjustable backlight brightness/power down time
Touchscreen Display.....	High-brightness color TFT LCD
.....	(1024x600 pixels) with 262K colors
.....	400:1 contrast ratio
.....	Integrated high-resolution resistive touchscreen
Display Size.....	10.2 in (259mm) diagonal
Display Backlight.....	Dual CCFL, 400nit
Wireless Ethernet.....	802.11b/g
Ethernet Port.....	RJ45, Gigabit
Video Output.....	VGA
COM1 Port.....	RJ45, RS-232
COM2 Port.....	RJ45, RS-232/RS-422/RS-485 configurable
Camera.....	300K pixel digital
Operating Temperature.....	+32°F to +122°F (0°C to +50°C)
Operating Humidity.....	5% to 95% Non-condensing
Total System Memory.....	4GB Flash (non-volatile) memory
.....	1GB 533MHz DDR2 RAM
Device Capability.....	Total number of devices is limited only by memory
Macro Capability.....	Unlimited steps in a single macro
.....	Total number of macros is limited only by memory
Communications.....	USB 2.0, Ethernet
Enclosure.....	ABS plastic / Metal
Front Plate.....	ABS plastic (Black or White)
Mounting.....	Screws or VESA standard mounting holes
Dimensions (W x H x D).....	12.3 in (313mm) x 8.7 in (222mm) x 2.0 in (52.5mm)
Installation Cut-Out (W x H).....	11.0 in (279mm) x 7.5 in (190mm)
Total Depth in wall.....	1.6 in (41mm)
Weight.....	2.2 lbs (1kg)
Warranty.....	One Year (Parts & Labor)

All specifications subject to change without notice



Also available in white.

5775 12th Avenue East, Suite 180, Shakopee, MN 55379
 PH: (952) 253-3100 • Website: www.rticorp.com

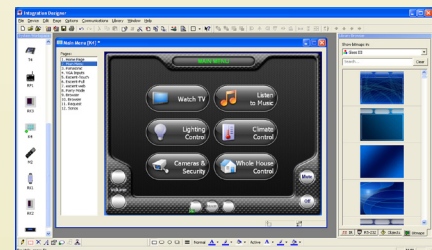
Accessories

ZRP-6	Remote Control Processor
MRP-64	Multi-Room Control Processor
XP-3	Advanced Control Processor
XP-6	Advanced Control Processor
XP-8	Advanced Control Processor
CB-8	Touchpanel Connecting Block
CPB-1	Control Port Connecting Block
ECB-5	IR Connecting Block
vIRsa Mouse	IR Emitter
RCM-12	Relay Control Module
CM-232	RS-232 Communication Module
VPS-1	Voltage Power Sensor
SPS-1	Video Sync Power Sensor



Other RTI Products

T1-B	Universal System Controller
M2	Universal System Controller
T2-B	Universal System Controller
T2-Cs	Universal System Controller
T2-C+	Universal System Controller
T3-V+	Universal System Controller
T4	Universal System Controller
ST-7	Universal System Controller
U1	Weather Resistant Controller
U2	Weather Resistant Controller
RKM-1	In-Wall Multi-Room Audio Keypad
RK1	In-Wall Keypad Controller
RK2	In-Wall Touchscreen Controller
RK3-V	In-Wall Touchscreen Controller
K4	In-Wall Touchscreen Controller



Integration Designer® Programming Software



It's Under Control®