



## Key Features

- Distributes up to eight analog audio sources to eight zones.
- Integrated 16 channel amplifier utilizes Cool Power® technology.
- Provides 25 watts per channel in each zone.
- Accessory wall plate allows sources to be connected remotely via Cat-5.
- Expansion to 64 output zones by stacking AD-8 Distributed Audio Systems.
- Tight integration with RTI control systems allows two-way feedback.
- Discrete volume and tone control in all zones using IR or RS-232.
- Pre-outputs allow outboard amplification for adding rooms or speakers.
- Optional phone and doorbell mute function

## AD-8 Distributed Audio System

Designed to be the audio hub for commercial and residential installations, this powerful audio and video distribution matrix switcher has the capability to route eight analog audio sources to eight different zones. For larger projects, expand the system up to 64 zones by stacking up to eight units together. Used with RTI controllers and processors the AD-8 provides complete control with two-way communication for zone-independent status feedback. Imagine every aspect of your environment working in complete harmony – from audio and video to lighting, temperature and more.

## Description

The AD-8 Audio Distribution System combines a 16 channel audio amplifier with a matrix-switching preamplifier. Perfect in larger residential and commercial installations where flexibility is important, the ability to listen to eight different audio sources in any zone will keep everyone happy. Up to four of the audio sources can even come from other areas, so sources like an iPod® or PC can be accessed where they are used, away from the rack. Meanwhile, the integrated Cool Power® amplifier keeps the beat with 25 watts per channel of crystal clear sound. Infrared and one-way RS-232 provide independent volume and tone controls in all output zones, while complete control is provided via two-way RS-232 when combined with RTI control solutions.

When the job grows, the AD-8 can expand along with it. The eight zone outputs can easily be expanded by stacking up to eight AD-8's together, for a maximum of 64 zones. The AD-8 from RTI will provide you with clean, stable, reliable power you can count on for years to come.

Call 952-253-3100

[www.rticorp.com](http://www.rticorp.com)

## Specifications - General

AC Input Voltage .....	115VAC, 120W
Power Switch .....	Front Panel On/Off with LED
Mounting .....	Rack mount or free standing
Dimensions (HxWxD) .....	5.24in(133mm) x 17.0in(432mm) x 14.75in(375mm)
Weight .....	24lbs (10.9kg)
Operating Temperature .....	C -10 to +40degrees, F +14 to +104 degrees
Local Input Source .....	Eight, RCA jacks x 16
Remote Input Mixed Source .....	Four, RJ45
CTRL In .....	One, 3.5mm, for IR control
Remote Source IR .....	One, 3.5mm x 4 sources, IR input
RS232 Port .....	One, Bidirectional control
Trigger Output .....	One, 12VDC @ 15mA
Voltage Output .....	One, 12VDC @ 500mA
Mute .....	One, 3.5mm
Output Zones .....	Eight zones, two channels each, phoenix connector
Pre-amp Output (fixed or variable) .....	Eight zones, two channels each, RCA jacks
Rated Power/Channel .....	>20 Watts, 20Hz to 20KHz (RMS, 2 chan driven 8ohms)
Power/Channel .....	>25 Watts @ 1KHz (RMS, 2 chan driven 8ohms)
Total Harmonic Distortion .....	@20W/8ohm, .5%
Total Harmonic Distortion .....	@1W/8ohm <.05%
S/N @ Rated Power, IEC A-wtd, Source Input shorted .....	92dB (mute +1)
Frequency Response 20Hz to 20KHz @ 1W/8ohm .....	1.5+/- .5dB
Input Overload .....	2.5V
Input Impedance .....	>22KOhms
Channel Separation 1KHz .....	>60dB
Crosstalk Between Sources @ Rated Power/1KHz .....	>75dB
Crosstalk Between Zones @ Rated Power/1KHz .....	80dB
Treble Control @10KHz .....	10dB +/- .5dB
Bass Control @100Hz .....	10dB +/- .5dB
Warranty .....	One Year (parts & labor)

All features and specifications subject to change without notice



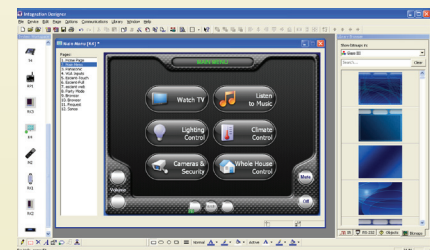
Rear view

## Accessories

RSP-1	Remote Source Connection Plate
PDM-1	Phone/Doorbell Mute Interface
CP-450	Four Channel Amplifier
CP-1650	Sixteen Channel Amplifier

## RTI Control Products & Accessories

Virtual Panel	PC Control Application
RTiPanel	Mobile Device Control Application
T1-B	Universal System Controller
M2	Universal System Controller
T2-B	Universal System Controller
T2-Cs+	Universal System Controller
T2-C+	Universal System Controller
T3-V+	Universal System Controller
T4	Universal System Controller
U1	Weather Resistant Controller
U2	Weather Resistant Controller
RKM-1	In-Wall Multi-Room Audio Keypad
RK1	In-Wall Keypad Controller
RK2	In-Wall Touchscreen Controller
RK3-V	In-Wall Touchscreen Controller
K4	In-Wall Touchscreen Controller
RK10	In-Wall Touchscreen Controller
RP-1	Remote Control Processor
XP-3	Advanced Control Processor
XP-6	Advanced Control Processor
XP-8	Advanced Control Processor



Integration Designer™ Programming Software

5775 12th Avenue East, Suite 180, Shakopee, MN 55379  
 PH: (952) 253-3100 • Website: [www.rticorp.com](http://www.rticorp.com)

**RTI**  
 It's Under Control®