



T2-Cs+ Remote Control

The second generation of the T2-Cs comes equipped for the modern media room, providing reliable control of the entire system while remaining easy to use. The T2-Cs+ remote control has an ergonomic design that fits perfectly in the hand, featuring a customizable color display and a full complement of hard buttons for frequently used functions. The T2-Cs+ provides unmatched value by bringing high-end features to a budget-friendly level, including two-way feedback from supported devices, built-in dual RF capability and a three-way rocker switch and a that allows the user to scroll through music lists or navigate on-screen menus on a TV.

Key Features

- Dual RF transmission capability uses 433MHz and 2.4GHz (utilizing Zigbee® technology).
- Two-way feedback from compatible devices using 2.4GHz (Zigbee®) and RTI control components.
- Full color TFT LCD to display custom buttons, text and graphics.
- Graphics programming is quick and efficient using auto aligning tools or turn the grid off for complete customization.
- Integrated high-resolution touchscreen.
- Thirty-five assignable/programmable keypad buttons.
- Three-way rocker switch for scrolling list navigation.
- Tilt switch can automatically turn on the backlight when picked up.
- Extremely bright, backlit display and keypad.
- Intuitive layout of keypad buttons for commonly used functions.
- Transmits IR and both RF (or both - on a single button or within a macro!).
- Optional RF receiver allows you to transmit through walls, cabinets, etc.
- Completely customizable and programmable.
- Ergonomic design permits effortless one-handed operation.
- Extremely wide IR transmitting frequency range.
- Non-volatile Flash memory stores your system configuration even when power is not present.
- Field upgradeable firmware.
- USB Programming.



Call 952-253-3100

www.rticorp.com



It's Under Control®

Specifications

Power	3.6 VDC, 1200 mAh Lithium-Ion Battery Pack
Power Management	Automatic On/Off (tilt switch)
Infrared Control Range	30 feet (9.1 meters) @ 60 degrees
Infrared Frequency Range	15 KHz - 460 KHz
Radio Frequency Control Range	Up to 100 feet (30.5 meters)
.....	(with optional System Interfaces/Processors)
Radio Frequency Carrier	802.15.4 @ 2.4 GHz
.....	(ZigBee® Wireless Mesh Networking) & 433MHz
Display	High-contrast Color TFT LCD
.....	1/4 VGA (240x320 pixels) with 65K colors
.....	Integrated high-resolution touchscreen
Display Size (H x W)	2.4 in (61mm) diagonal
Backlight	White LED (Display), Blue/Red/White LED (Keypad)
Operating Temperature	+32°F to +122°F (0°C to +50°C)
Operating Humidity	5% to 95% Non-condensing
Total System Memory	128M Bytes Flash (non-volatile) memory
Device Capability	Total number of devices is limited only by memory
Macro Capability	Unlimited steps in a single macro
.....	Total number of macros is limited only by memory
.....	Macro capability on every button
Communications	USB programming port
Enclosure	High-impact molded ABS plastic
Dimensions (H x W x D)	9.75" (248mm) x 2.5" (64mm) x 1.0" (25mm)
Weight	9 oz. (255g) with battery pack
Warranty	One Year (Parts & Labor) / 90 days on the battery

All specifications subject to change without notice

* Two-way feedback available when used with RTI control components.



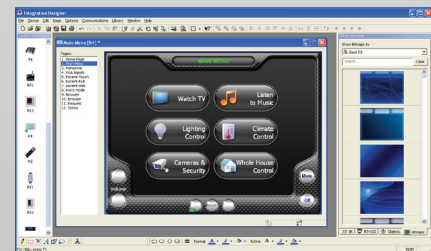
Accessories

RP-4	RF Control Processor
XP-3	Advanced Control Processor
XP-6	Advanced Control Processor
XP-8s	Advanced Control Processor
RM433	433MHz RF Antenna
ZM24	2.4GHz Zigbee Transceiver
CB-8	Touchpanel Connecting Block
CM-232	RS-232 Communication Module
CPB-1	Control Port Connecting Block
ECB-5	IR Connecting Block
ESC-2	Ethernet Serial Converter
IPE-4	IR Port Expander
PCM-4	Port Control Module
RCM-4	Ethernet Relay Module
vIRsa Mouse	IR Emitter



Other RTI Products

Virtual Panel	PC Software Interface (App)
RTiPanel	Mobile Software Interface (App)
SURFiR	Companion Remote Control
T1-B+	Remote Control
T2i	Remote Control
T2x	Remote Control
T3x	Remote Control
T3-V+	Remote Control
RKM-1+	In-Wall Audio Distribution Keypad
RK1+	2-4-8 Button In-Wall Keypad
KX2	2.8 inch In-Wall Touchpanel Keypad
RK3-V	3.5 inch In-Wall Touchpanel Keypad
KX7	7 inch In-Wall Touchpanel
CX7	Countertop/Under-Cabinet Touchpanel
AD-4x	Distributed Audio System
AD-8x	Distributed Audio System
RTiDock	Dock for Apple iPod®
CP-450	4 Channel Amplifier
CP-1650	16 Channel Amplifier



Integration Designer® Programming Software



It's Under Control®

5775 12th Avenue East, Suite 180, Shakopee, MN 55379
 PH: (952) 253-3100 • Website: www.rticorp.com