

Simplify your world



REMOTE
TECHNOLOGIES
INCORPORATED



Enjoy the experience with RTI

A pioneer in control and automation technology

Founded in 1992, Remote Technologies Incorporated (RTI) is a leading control systems manufacturer offering innovative, sophisticated, and user-friendly products for professionally installed electronic systems. Delivering a superior experience for the end-user is not a revelation, it is what we have been perfecting for over twenty years.

Simplicity and convenience

The complete line of RTI solutions - custom tailored to meet your specific needs - enhance the control experience through simplicity and convenience. From sound and light, to HVAC and security, all the electronics systems can be instantly accessed, and their functions effortlessly choreographed.

Our Mission:

From home theater to state-of-the-art home automation, RTI's guiding passion is to create products that are so powerful, yet so intuitive in operation, that you become one with your surroundings. Achieving this result requires a great deal of innovation, and an unusual commitment to every detail of product design. To us, a product that is usable, durable, and reliable is not good enough. We demand that the product experience not only be functional, but also enjoyable. It is this philosophy that sets RTI apart from our competition.



With one touch

Technology should make life more fulfilling, yet too often we don't dictate the terms of the relationship – our devices do. Now you can operate all your electronics quickly and intuitively with one touch, via RTI system controllers, your smart phone, tablet or PC.

Master your media

Are you tired of the remote control puzzle on your coffee table? RTI solutions provide you with easy access to your entertainment technology - simply - anywhere.



Theater



Game Room/Bar



Outdoor Areas



Living Spaces

Automate the environment

Experience the ultimate in environmental intelligence. RTI combines unbelievable power with astounding simplicity of operation in a system that controls everything – but you.



Indoor/Outdoor Lighting



Shades/Fans/HVAC



Pool/Spa



Energy Management/Irrigation

Secure the property

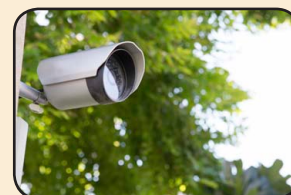
Take comfort in the knowledge that your home is secure. With all of the measures in place to keep your family safe and you informed, RTI will give you peace of mind at home and away.



Security System



Door Locks



Security Cameras



Entry Gate

Check in -
anytime, anywhere.



People get ready



Greet the day -
on your terms



3pm

8am

7am

Make your home
come
alive

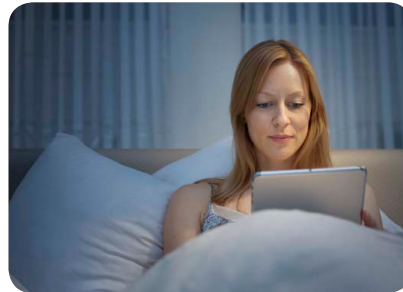




Easy entertaining



Relax - it's movie time



Good night

6pm

9pm

11pm

From home theater to state-of-the-art home automation, RTI control systems fill your world with music, movement and light. Technology that used to complicate, now delights, and life is once again in harmony.

This is the RTI-enabled home: an oasis where your needs are fulfilled through technology. Where devices adapt to your needs, rather than the other way around. And a world of pleasures can be summoned – instantly, effortlessly, with a simple touch.

Greet the day - on your terms

When you have a home full of sleepy people, getting yourself ready can be the hardest thing of all. Before tending to them - tend to yourself. Don't worry, the rest of the house is running just fine.

- With a touch of a button, the shades open...slowly.
- The lights give a soft glow at first, getting brighter to light your way.
- Will it be soothing music and a nice warm bath? Or a morning workout and the news?
- The bath and dressing room are lit up and ready - it's time.



T1-B+

- Reliable wireless control - even under the covers.
- Backlit buttons for dark rooms.
- Charging dock and lithium-ion battery for convenient charging.

While you slept

Overnight, RTI has been working overtime.

- The outdoor lighting was shut off at sunrise.
- The pool temperature is set low to save energy.
- Shades in the kitchen and dining room have opened.



People get ready

Now that you've had a few moments of peace, time to get the rest of the family moving.

- Give the kids a wake up call - a playlist with their favorite music...or yours - perhaps marching bands?
- Check the weather...chance of storms - better pack a coat for the kids.
- There's time for breakfast and some music to get everyone groovin' on their way.

KX7

- Experience the convenience of dedicated in-wall control.
- Big 7" color touchscreen for easy control "on-the-fly."
- Integrated video Intercom allows convenient communication throughout the home.*
- Control of the home, check the weather, even watch TV on the amazing KX7.



While you get ready

RTI is waking the house

- Shades throughout the house have opened to let the light shine in.
- The temperature has been adjusted to keep you comfortable while you prepare for the day.
- The irrigation system is watering the gardens - after checking to see if it's raining.

* Video intercom support will require a future firmware update.



Check-in - anytime, anywhere

From home or the office, even the beach, you can enjoy the convenience and peace of mind provided by the award-winning RTiPanel app.

- Check the security system, the lights, the temperature - then go about your day.
- The repairman arrives - unlock the door and watch the security camera until the work is done.
- Receive an email notifying you the kids are home.
- Having guests over tonight? Better turn up the pool a few degrees in case a pool party breaks out.

RTiPanel App

- Allows remote control and monitoring from virtually anywhere.
- Interface can be custom designed to your specific needs.
- Works on Apple® and Android® devices - PC version also available.



While you're away

Your RTI system is making energy saving adjustments and keeping tabs on the security system.

- It started raining, so the irrigation cycle is halted and rescheduled.
- The shades on the sunny side of the house are closed to keep the home cool.
- The security system is ready to report any anomalies - from intruders, to smoke alarms and water leaks, etc.



Easy entertaining

Arrive home in a rush - get dinner started and open the wine. Now the easy part - press “Entertain”:
The lights adjust in all the right places, the “party” playlist is started and music fills the home.
Pour a glass of wine, it’s time to change into something more comfortable. Your guests will be arriving soon.

- Greet your guests and unlock the door...from the controller in your bedroom.
- Fire up the game room for the kids, put the game on the TV’s.
- The kids want to hear their music - Pandora®, Spotify®, music library? Let them decide.

KX3

- 3.5” color touchscreen for intuitive control over the music and the ambience.
- Integrated video Intercom allows convenient communication throughout the home.*
- In-wall control - always on...easy enough for anyone to use.



While you're entertaining

Your RTI system is transitioning your home as night approaches.

- The sun has set and the outdoor lighting comes on.
- “Entertain mode” means more light on the front entry, steps, driveway and pool.
- The window shades in the bedrooms and master bath have closed.



Relax - it's movie time

The kids are off to bed - It's time to fire up the popcorn, bring out the scotch, kick up your feet and watch a movie.

- Disable Entertain Mode and the home goes quiet.
- Head to the theater - press "Watch Movie" and let the theater come to life.
- The room lights dim and LED lighting emits a pleasant glow.
- The screen drops, the projector is ready and surround sound is set.
- Press "play" - the show has already begun.



T2x

- 2.8" Touchscreen - sleek and sophisticated.
- Control and feedback - even cover art.
- All the right buttons in all the right places.

While you're watching the movie

Allow yourself to be immersed in the movie magic - the home is under control.

- The hallway light to the bathroom is lit - providing safe passage for the kids.
- The temperature in the bedroom zone has been adjusted for optimal comfort.
- The pool temperature is turned down - no pool party tonight.



Good night

What a beautiful day - time spent with family and friends. It's time for bed - press "Good Night" and let the house prepare for tomorrow. All systems are checked and adjusted.

- Theater room shut down - Check.
- All TV's and music off - Check.
- All main living and hall lights off or adjusted - Check.
- All shades are closed - Check.
- Temperature adjusted in all zones - Check.
- Security system armed, doors locked, garage door closed - Check.

RTiPanel App

- Custom interface, designed specifically for your home.
- Works in harmony with rest of the RTI system - same look, same control.
- Works on Apple® and Android® smart devices, and PC's too!



While you sleep

The beauty of the automated home is, even while you sleep, your home is working for you. The RTI control system is able to monitor all of the homes electronics and sensors, ready to trigger events if there is a change. Sleep well, the cycle will start all over again - at sunrise.



Big Control in Little Rock

Installation Challenge

The customer was looking for an easy way to control multiple A/V systems both inside and outside a 5,000-square-foot home in Little Rock, Arkansas. This included the ability to control visitor access remotely while monitoring the entire property from within the residence.

Solution

integrator FX Pros installed a wide-ranging RTI control system to bring the client fully automated outdoor gate notification, simple home theater operation, and single-button scene settings that rapidly transform specific areas of the house into pre-programmed audio, video, and lighting environments. Seamlessly integrated despite the house's rigid structural characteristics, FX Pros put together an easy-to-use system without disturbing the home's classic look and feel.



KX2



CX7

"The installation has been an enormous success; the client is extremely satisfied with the system's speed, responsiveness, and undistruptive design across all devices. There are already plans to expand the system in the near future."

Jeff Jenkins - Owner, FX Pros



Fun in the sun

Installation Challenge

In addition to TV and streaming music for a new residential pool pavilion, one of the homeowner's highest priorities was simple control over the entire system.

Solution

Utilizing solutions from RTI, integrator Lighthouse Technologies was able to provide their client with intuitive control over their audio/video using a waterproof iPad® and a sleek handheld controller featuring customized “easy buttons.” These buttons synchronize all speaker zones to the same source and turn the TVs in the same direction with a single button press. Of course, if desired, zones and displays can also be controlled individually.

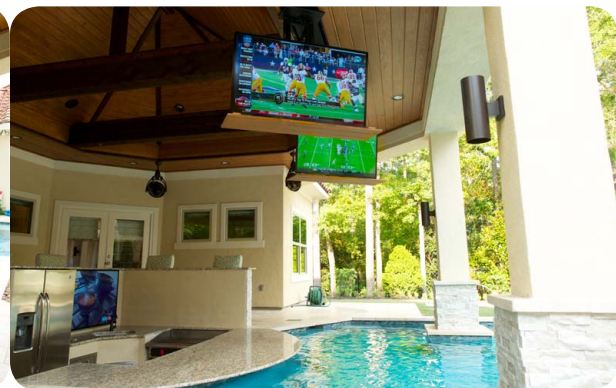
In addition, Lighthouse Technologies installed two 55- inch displays that drop down from the ceiling of the outdoor bar - that can swivel 360 degrees while another 60-inch LED TV is mounted behind the bar.



RTiPanel App

“What really makes this installation special for the homeowner, is the displays that drop down from the ceiling...and the ability to control it all from an iPad, while in the water, is the ultimate ‘wow factor.’”

Brian Kraft - Owner, Lighthouse Technologies



From Pool to Cool

Installation Challenge

Convert a seldom-used indoor swimming pool room into a dedicated theater where the homeowner could relax and entertain friends. For the project, the client had two important requirements: that the space provide a stunning visual and acoustic experience, and that the sophisticated A/V system be simple for the homeowner and guests to operate.

Solution

To meet the first requirement, every detail of the space is designed to produce a truly cinematic experience. From sound proofing, to carpet selection, to acoustic panels, all of the elements were hand picked to optimize the environment. Building on these elements, are the 7.1 surround sound, stunning LED lighting and comfy motorized leather seating.

The second requirement was simplicity. Using RTI's programming software, FAB was able to easily customize the control interface and utilize macro commands to create unique functionality. For example, when a source is selected by the client, the projector and amplifier switch on. When "Play Movie" is pressed, the lights automatically dim. When "Stop" or "Pause" are pressed, a low-level lighting scene is selected to maintain the cinematic ambiance.



T3x

"The client has been very happy with the final product. They've been blown away by their theater's visual and audio quality, and love the simplicity of the control system"

Phillip Warris, Director of FAB Audio Visual Ltd



Not just an app More than a remote A complete line of control solutions



Wireless Interfaces

The convenience and simplicity of a dedicated wireless controller is the easiest way to enjoy your electronic systems.



Wired Interfaces

Always on, wired controllers are fast and reliable, ready to keep up with your lifestyle.



Software Interfaces

Smartphones, tablets and PC's offer the same level of control, from virtually anywhere...even the beach.

Control Processors

RTI control processors mounted in the rack or cabinet, quietly provide the reliable control options necessary to have complete command of every aspect of a single room, or a whole house. Additional accessories are available to add even more power and flexibility, so that when the installation grows, the RTI control eco-system grows right along with it.



- Simple
- Powerful
- Unlimited

Audio Distribution Systems and Amplifiers

Let the music play wherever you do. RTI audio distribution systems allow the user to listen to any source in any room. Listen to Spotify in the kitchen, talk radio in the office, the media library in another and any combination in between, it's up to you.



Master your media

Are you tired of the remote control puzzle on your coffee table? RTI solutions provide you with easy access to all of your entertainment technology.

Audio

AV Receivers
Multi-zone Audio
Media Streamers
Audio Processors
Audio Matrix Switches



Video

Televisions
DVRs
Media Streamers
Video Projectors
Video Matrix Switches



Integration Partner Program

RTI has reached out to the top manufacturers in their respective markets and established a partnership to ensure that RTI products integrate easily with their products*. RTI products have been designed with an open architecture and robust integration options for reliable control over all of your electronic systems. If a manufacturer or product is not listed above, it is very likely that RTI can control it. Talk to your dealer today for details.

*While we do our very best to support all of the products manufactured by the companies in our Integration Partner Program, the level of support may vary depending on the type and models that are used.

Automate the environment

Experience the ultimate in environmental intelligence.

Utility

Lighting
HVAC/Thermostats
Shade Systems
Pool/Spa Control
Irrigation
Energy Management



Secure the property

Take comfort in the knowledge that your home is secure.

Security

Security Cameras/DVR
Security Systems
Door Locks
Power Conditioners



Award-Winning Products



The award-winning line of RTI user interfaces and control processors have been singled out by industry and media alike for advanced technology, superior ergonomics and intuitive operation.

RTI products are sold through a network of trained dealers and professional system integrators. RTI does not sell directly to the public.

To locate a qualified dealer, visit www.rticorp.com or call us today at 952.253.3100.

5775 12TH AVE EAST
SUITE 180
SHAKOPEE MN 55379
952-253-3100
RTICORP.COM

